

Fiscal 2010 DeCA Million-Dollar Vendors

Following is a list of 252 companies that received more than \$1 million in payments from DeCA in FY 2010, which ended Sept. 30, 2010. In most cases, payments made to divisions or subsidiaries of corporations have been consolidated and included as one sum here; asterisks indicate consolidated listings. Dollar volume shown for brokers, distributors and buy/sell firms generally reflect only amounts paid specifically to those firms and do not include payments made directly to their principals, which in many cases represent the bulk of their sales.

Rankings			Company	Fiscal 2010 Payments
'10	'09	'08		
1	1	1	Kraft Foods*	\$406,292,942
2	2	3	Tyson Foods*	405,509,125
3	3	2	Procter & Gamble*	295,882,034
4	5	6	Nestlé USA*	203,868,819
5	4	5	General Mills	202,728,266
6	6	4	Military Produce Group	199,786,689
7	9	19	Mid Valley Products Inc.	131,823,677
8	8	8	ConAgra*	127,505,899
9	7	7	Unilever*	121,530,428
10	10	9	Army & Air Force Exchange Service	114,781,291
11	11	11	Kellogg Sales Co.*	114,109,598
12	12	12	Coca-Cola Co. & Bottlers*	107,566,808
13	13	10	The Quaker Oats Co.	93,444,359
14	16	15	Frito-Lay Inc.	85,403,805
15	14	13	Campbell Soup Co.*	83,614,491



16	15	14	Systems 2000	80,084,040
17	19	18	Military Deli & Bakery	79,709,527
18	17	16	Coast Produce	77,369,501
19	25	36	The J.M. Smucker Co.	72,243,418
20	22	60	Global Military Marketing Inc.	68,846,889
21	20	21	Sara Lee Corp.*	68,803,732
22	21	20	Kimberly-Clark Co.	67,242,297
23	23	22	Pepsi-Cola Bottling Group & Bottlers*	64,492,967
24	24	26	Mars Inc.*	63,960,305
25	26	25	S&K Sales Co.	63,248,538
26	18	17	Del Monte Corp.	63,001,548
27	28	27	Georgia-Pacific	57,358,678
28	27	23	Johnson & Johnson*	55,234,229
29	31	31	H.J. Heinz*	46,695,881
30	29	30	Alder Foods	46,297,027
31	32	32	Reckitt Benckiser	45,509,416
32	30	28	Clorox Co.*	45,122,068
33	35	38	Elite Food Co.	44,678,263
34	34	33	Dixon Marketing	44,121,239
35	33	35	Northeast Military Sales Inc.	43,409,395
36	37	37	AB Foods LLC*	43,023,026
37	38	40	McCormick & Co. Inc.	41,185,816
38	36	42	Overseas Service Corp.	40,253,008
39	39	39	S.C. Johnson and Son Inc.	35,925,081

Rankings			Company	Fiscal 2010 Payments
'10	'09	'08		
40	41	54	Fresh Express Inc. (Chiquita)	\$35,356,297
41	40	41	Cargill Meat Solutions Corp.	34,705,723
42	43	45	Hershey Foods Corp.	30,831,643
43	44	48	Reese Inc.	30,471,879
44	42	75	Bimbo Bakeries USA Inc.*	29,868,971
45	51	88	Raymond Express Intl.	29,660,958
46	45	44	B. Catalani Inc.	29,512,607
47	46	43	National Beef Packing Co.	29,482,175
48	47	47	Colgate-Palmolive Co.	28,552,918
49	49	50	Foster Farms	26,161,903
50	52	52	Pinnacle Foods	25,284,898
51	50	49	C&C Produce	24,808,237
52	48	46	Dean Foods*	24,631,920
53	54	55	Abbott Labs*	24,200,001
54	57	61	Church and Dwight Co. Inc.	23,776,858
55	56	56	Ocean Spray Cranberries Inc.	23,277,196
56	53	51	Alcoa Reynolds Metals*	23,011,247
57	—	—	Tombstone Pizza	22,385,371
58	145	—	Sun Products Corp.	22,168,274
59	59	59	Spokane Produce Inc.	20,488,631
60	61	71	JFC Intl. Inc.	20,242,577
61	60	67	Sargento Foods Inc.	19,887,234
62	64	64	Bisek and Co. Inc.	19,203,976
63	62	66	Schwan's Consumer Brands NA	18,948,577
64	65	68	Energizer Holdings Inc.*	18,914,406
65	63	62	Dial Corp.	18,437,276



66	71	70	Coastal Pacific Food Distributors Inc.	18,308,345
67	67	72	Discovery Foods LLC	17,891,663
68	68	74	Johnsonville Sausage LLC	17,359,615
69	76	82	Tony's Fine Foods Inc.	16,608,681
70	80	80	Glaxosmithkline Consumer Healthcare	16,391,436
71	58	58	Gateway Military Sales LLC	16,212,781
72	69	65	Interstate Brands Corp.*	16,162,883
73	70	78	Oriental Trading Co.	16,082,115
74	73	79	Wyeth Consumer Healthcare (Pfizer)	16,057,784
75	—	—	Nayyarsons Corp.	15,138,270
76	72	76	Land O' Lakes Inc.	15,108,298
77	81	84	Coleson Foods	14,738,271

—Continued

Rankings			Company	Fiscal 2010 Payments
'10	'09	'08		
78	84	—	Starkist Co.	\$14,536,172
79	66	57	National Dairy Holdings*	14,456,179
80	75	81	Dr Pepper Snapple Group*	13,959,327
81	82	87	Alberto Culver Inc.	13,593,911
82	77	77	Pactiv Corp.	13,351,847
83	150	—	Ralcorp Holdings	13,345,491
84	74	86	Schreiber Foods Inc.	13,249,402
85	83	85	Flowers Foods*	12,960,219
86	79	69	Mead Johnson Nutrition Co.	12,691,991

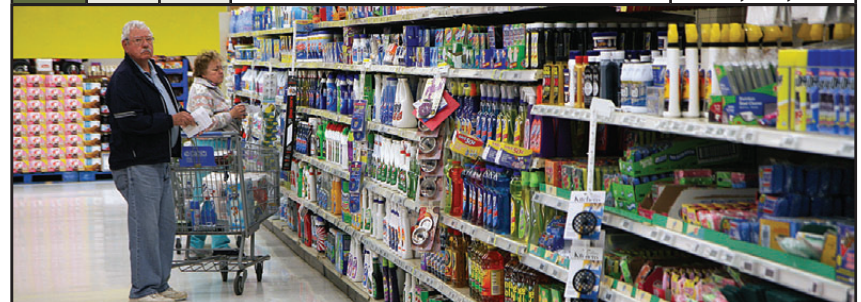


87	88	89	The Dannon Co. Inc.	12,550,414
88	85	90	Euro American Brands Inc.	12,524,110
89	87	92	Rondo Specialty Foods	12,481,923
90	86	97	Dinofinn Inc.	12,260,515
91	78	83	Birds Eye Foods Inc.*	12,095,910
92	94	96	Luberski Inc.*	11,576,729
93	90	91	Bayer Corp.	11,283,560
94	97	182	Pharmavite LLC	11,054,367
95	89	93	The Pictsweet Co.	10,915,631
96	92	99	McKee Foods Corp.	10,388,418
97	93	94	Bumble Bee Foods LLC	10,349,843
98	98	156	Domino Foods (American Sugar Refining)*	9,948,541
99	95	98	Mission Foods	9,555,689
100	91	63	U.S. Nutrition*	9,474,978
101	55	53	Special Markets Inc.	9,242,022
102	101	112	Eggland's Best Inc.	9,216,394
103	99	114	Riviana Foods Inc.	8,424,271
104	121	124	Schering Plough HealthCare (Merck)	8,189,548
105	100	104	Industries for the Blind*	8,013,353
106	107	106	Gorton's Inc.	7,878,386




107	102	103	White Dairy Co. Inc.	7,835,024
108	103	110	B&G Foods Inc.	7,773,362
109	122	138	First Wave Sales LLC	7,770,152
110	113	119	Ann's House of Nuts Inc.	7,700,405
111	118	137	Lance Inc.	7,684,080
112	111	120	Hartz Mountain Corp.	7,665,352
113	106	108	Welch's	7,619,465
114	109	122	Daisy Brand LP	7,561,703
115	131	164	Diamond Foods	7,363,075
116	125	132	Imperial Sugar Co.	7,357,172
117	114	105	Di Tommaso Inc.	7,345,287

Rankings			Company	Fiscal 2010 Payments
'10	'09	'08		
118	96	118	L'Oréal USA Inc.*	\$7,167,493
119	104	111	Triunion Seafoods LLC	7,122,617
120	117	123	Mario Camacho Foods LLC	7,083,752
121	123	130	Rich Products Corp.*	7,000,764
122	115	128	Snyder's of Hanover Inc.	6,955,333
123	112	116	Kenosha Beef Intl.	6,800,570
124	110	127	Ralston Foods	6,795,972
125	119	126	3M Co.	6,775,928
126	124	109	Marcal Paper Mills Inc.	6,627,080
127	116	139	EJP Intl.	6,460,733
128	133	131	Red Bull North America Inc.	6,444,656
129	142	155	Favata Bakery Inc.	6,433,489
130	135	—	Novartis Consumer Health	6,343,420
131	108	115	American Italian Pasta Co.	6,299,840
132	126	157	Darigold Inc.*	6,280,183
133	127	125	Bar S Foods Co.	6,153,836
134	128	107	Dairy Maid Dairy Inc.	6,135,459
135	193	190	Prairie Farms Dairy	6,093,637
136	120	141	Maruchan Inc.	5,917,118
137	134	140	Shasta Sales Inc.	5,846,100
138	132	136	Otis Spunkmeyer Inc.	5,843,346
139	129	133	John B. Sanfilippo and Son	5,810,089
140	204	—	American Rice Inc.	5,775,522



141	144	154	Chattem Inc.	5,541,121
142	139	129	Careytown Seafood Inc.	5,407,731
143	—	—	Acosta Military Sales LLC	5,353,081
144	130	134	Sunny Delight Beverage Co.	5,294,566
145	140	143	Farley's & Sathers Candy Co.	5,292,254
146	137	145	Wells Dairy Inc.	5,261,946
147	136	117	Maryland and Virginia Milk Producers	5,229,037
148	155	150	Turn Key Management Inc.	5,179,905
149	138	121	Hillandale Farms East	5,152,796
150	187	146	Solo Cup Co./Fonda Group*	5,119,672
151	146	148	Challenge Dairy Products	5,056,093
152	162	211	Lakeside Food Inc.	4,743,283
153	143	153	New World Pasta Co.	4,506,745
154	148	149	Pompeian Inc.	4,391,884
155	147	161	Nissin Foods USA Co. Inc.	4,347,544
156	158	165	Sacramento Valley Gourmet Harvest Foods	4,256,073
157	153	135	Beef Products Inc.	4,179,675
158	151	147	Great Atlantic News LLC	4,134,690
159	152	142	ACH Food Companies Inc.*	4,134,334
160	163	168	Kikkoman Intl. Inc.	3,925,456
161	154	196	Bellisio Foods	3,917,272
162	105	180	Sioux Honey Association	3,666,233
163	156	160	Windsor Foods	3,592,440
164	160	163	Filippo Berio	3,562,462
165	173	172	Hawaiian Isles Kona Coffee Co.	3,545,035

—Continued

Rankings			Company	Fiscal 2010 Payments
'10	'09	'08		
166	161	144	Santee Dairies Inc.	\$3,508,718
167	168	169	Diamond Head Wholesale Inc.	3,439,600
168	165	178	Smart Balance (GFA Brands Inc.)*	3,324,677
169	166	170	Blue Bell Creameries LP	3,301,459
170	172	179	Newman's Own Inc.	3,246,418
171	174	162	Hollandia Dairy Inc.	3,239,484
172	—	—	Alcon Laboratories Inc.	3,189,580
173	242	—	Tampa Bay Fisheries Inc.	3,181,901
174	170	176	Daiichiya Loves Bakery Inc.	3,169,510
175	202	—	Herr Foods Inc.	3,080,073
176	175	181	Otis McAllister Inc.	3,058,476
177	141	113	Dixie Egg Co. (Foodonics Intl.)*	3,056,632
178	159	171	Sun Foods LLC	3,040,223
179	215	213	Rose Acre Farms Inc.	3,020,154
180	169	175	United States Bakery	2,949,157
181	188	189	Global Sales Inc.	2,896,798
182	177	187	Knouse Foods Inc.	2,870,649
183	178	177	Hiland Dairy Co.	2,821,106
184	179	188	Bausch & Lomb Inc.	2,712,879
185	184	194	Mount Olive Pickle Co. Inc.	2,665,872
186	—	—	L and M Marketing LLC	2,662,348
187	225	254	S. Schwartz Sales Inc.	2,650,778
188	181	195	National Vitamin	2,508,822
				
189	190	197	Ruiz Food Products Inc.	2,491,904
190	186	199	Utz Quality Foods Inc.	2,436,094
191	164	186	Haddon House Food Products	2,399,553
192	191	205	JCS Marketing SW Military Division	2,219,520
193	201	230	H.P. Hood*	2,191,144
194	196	203	Jones Dairy Farm	2,179,851
195	198	202	Andrew Jergens Co. (Kao Brands)	2,176,107
196	180	184	Navy Exchange Service Command	2,144,792
197	176	167	C&S Wholesale Grocers	2,133,774
198	212	224	Hawaii Foodservice Alliance LLC	2,129,253
199	197	204	Bruce Foods Corp.	2,082,074
200	185	183	Carl Buddig & Co.	2,078,456
201	189	193	Northern Fish Products	2,017,217
202	199	207	Melitta USA Inc.	2,011,138
203	214	234	Schiff Nutrition Group Inc.	1,963,470
204	232	—	Advance Brands LLC	1,955,263
205	182	192	Kaytee Products Inc.	1,954,843
206	192	200	Irving Tissue Inc.	1,915,776
207	206	222	Martin's Famous Pastry Inc.	1,866,640
208	—	—	Oberto Sausage Co.	1,824,082
209	208	209	Specialty Brands of America	1,811,686
210	213	217	Hawaiian Host Candies of LA Inc.	1,789,008
211	209	206	Odom's Tennessee Pride Sausage	1,788,059
212	—	—	Valley Fresh Foods/Nest Best Eggs	1,771,072
213	203	231	American Pop Corn Co.	1,741,935
214	210	221	N.K. Hurst Co. Inc.	1,740,720

Rankings			Company	Fiscal 2010 Payments
'10	'09	'08		
215	—	—	Hanesbrands Inc.	\$1,732,458
216	205	198	Shamrock Foods Co.	1,726,662
217	200	225	Giorgio Foods Inc.	1,724,292
218	231	—	AJW Sales Inc.	1,690,980
219	218	210	Star Fisheries	1,678,920
220	211	219	Franklin Baking Co.	1,653,633
221	240	250	Plymouth Poultry Co.	1,588,678
222	149	152	Hain Celestial Group*	1,559,692
				
223	183	243	Parra Sales Inc.	1,537,079
224	224	233	Royal Oak Sales Inc.	1,503,531
225	207	212	Schulze & Burch Biscuit Co.	1,498,077
226	220	237	Nonni's Food Co. Inc.	1,489,723
227	223	227	Paradise Beverages Inc.	1,488,824
228	—	—	Golden Touch Trading	1,438,941
229	217	246	Voortman Cookies Limited	1,423,525
230	216	214	Henry W Stapf Inc.	1,408,937
231	—	—	Hickman's Egg Ranch	1,388,098
232	—	—	Kee World Trading Co.	1,345,116
233	219	226	Stockmeyer NA Inc.	1,331,883
234	221	241	Holsum Bakery Inc.	1,324,917
235	227	218	Cream-O-Land Dairy LLC	1,318,945
236	222	232	Schmidt Baking Co. Inc.	1,309,555
237	228	236	Draper Valley Farms	1,244,318
				
238	230	240	Boehringer Ingelheim	1,242,630
239	234	—	Storck USA LP	1,240,269
240	—	—	R.M. Palmer Co.	1,221,860
241	243	260	D&D Marketing Solutions	1,194,625
242	239	258	Tampa Bay Wholesale Foliage	1,181,634
243	236	245	Huhtamaki Foodservice Inc.	1,135,451
244	195	185	Gustafson's LLC	1,129,561
245	194	—	Mastermind Marketing LLC	1,114,881
246	237	256	McIlhenny Co.	1,093,378
247	—	—	White Apron Inc.	1,048,711
248	247	249	Burleson's Inc.	1,039,809
249	235	—	Merisant US Inc.	1,036,628
250	167	95	Sarvis Inc.	1,031,826
251	245	—	T.W. Garner Food Co.	1,005,003
252	226	252	Jel Sert Co.	1,000,314

Compiled by Exchange and Commissary News
Source: DeCA