

# Fiscal 2015 Million-Dollar Vendors

Each of the following 212 companies received more than \$1 million in payments from the Defense Commissary Agency (DeCA) during fiscal year 2015, which ended Sept. 30, 2015. In most cases, payments made to divisions or subsidiaries of corporations appear under the corporate name. Such listings have been consolidated and are included as one sum here; asterisks indicate consolidated listings. Dollar volume shown for brokers, distributors and buy/sell firms generally reflects only amounts paid specifically to those firms and does not include payments made directly to their principals, which in many cases represent the bulk of their sales.

Rankings			Company	Fiscal 2015 Payments
'15	'14	'13		
1	1	1	Tyson Foods*	\$473,915,499
2	2	2	Kraft Heinz Co.*	341,503,637
3	3	3	Procter & Gamble	233,309,132
4	4	4	Military Produce Group LLC*	215,824,378
5	5	5	Nestlé*	185,376,512
6	7	7	Mid Valley Products Inc.*	170,724,887
7	6	6	General Mills*	156,510,843
8	9	9	National Beef Packing Co. LLC*	132,983,355
9	8	8	ConAgra Foods*	114,682,364
10	11	11	Kellogg Co.*	112,706,206
11	13	13	Military Deli & Bakery Services	102,561,535
12	12	12	Systems 2000 Inc.*	102,083,432
13	10	10	Unilever*	91,899,164
14	15	20	S & K Sales Co.	91,278,458
15	14	17	Coast Produce Co.*	84,161,015
16	16	15	Coca-Cola Co. & Bottlers*	81,599,926
17	17	14	The Quaker Oats Co.*	79,195,396
18	18	19	Frito-Lay Inc.*	78,585,023
19	20	18	The J.M. Smucker Co.*	74,564,181
20	19	21	Campbell Soup Co.*	72,200,396

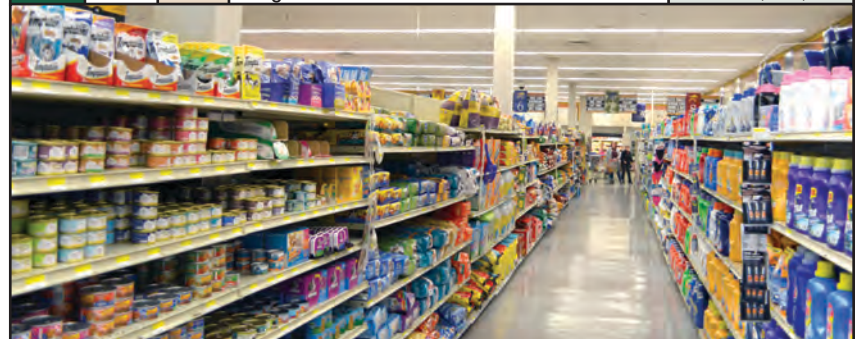


21	22	23	Elite Food Co.*	66,370,440
22	26	31	Acosta Military Sales LLC*	61,755,749
23	21	24	Mars Inc.*	61,015,767
24	28	32	Alder Foods Inc.*	56,266,149
25	24	16	Mondelēz Global LLC*	53,363,153
26	25	29	Georgia-Pacific Consumer Products	53,088,634
27	23	26	Kimberly-Clark Corp.	52,998,896
28	33	36	Dixon Marketing Associates Inc.	52,652,655
29	30	22	Army & Air Force Exchange Service	52,644,288
30	27	27	Hardie's Fruit & Vegetable Co.*	51,632,932
31	34	34	OSC Solutions*	47,468,973
32	32	28	Pepsi-Cola Bottling Group & Bottlers*	44,211,209
33	35	35	Bimbo Bakeries USA Inc.*	42,478,906
34	36	37	McCormick & Co. Inc.*	41,001,844
35	37	38	Reckitt Benckiser LLC*	39,521,255
36	40	39	The Clorox Co.*	38,818,270

Rankings			Company	Fiscal 2015 Payments
'15	'14	'13		
37	42	46	Pinnacle Foods Group LLC*	\$35,988,529
38	38	42	Raymond Express International	35,850,741
39	45	48	Harris Ranch Beef Co.	35,393,379
40	29	25	Del Monte Corp.*	35,061,867
41	41	43	Reese Military Sales Inc.*	33,141,441



42	46	30	Global Military Marketing Inc.	32,917,298
43	44	44	Johnson & Johnson*	32,522,595
44	47	47	The Hershey Co.*	31,557,526
45	48	49	S.C. Johnson & Son Inc.	27,487,023
46	73	93	Global Sales Inc.*	27,053,964
47	58	56	Tony's Fine Foods Inc.*	26,912,805
48	63	75	Advantage Sales LLC*	25,550,216
49	83	-	Smithfield Foods*	25,315,101
50	50	53	Dean Foods*	24,330,529
51	59	74	S. Schwartz Sales Inc.*	24,221,516
52	57	57	Spokane Produce Inc.	23,886,852
53	52	55	Windsor Foods	23,822,524
54	51	52	Reynolds Consumer Products Inc.	23,708,392
55	54	54	Sargento Foods Inc.	23,651,806



56	49	45	Fresh Express Inc. (Chiquita Brands)	23,102,390
57	53	50	Colgate-Palmolive Co.	23,093,028
58	55	59	Church & Dwight Co. Inc.	23,090,052
59	56	60	Johnsonville Sausage LLC	23,029,912
60	107	-	Big Heart Pet Brands	21,876,334
61	68	70	Sodexo Management Inc.*	20,636,743
62	62	51	Bisek & Co. Inc.*	20,417,803

—Continued



Rankings			Company	Fiscal 2015 Payments
'15	'14	'13		
63	74	81	Coastal Pacific Food Distributors*	\$20,224,141
64	69	65	Northeast Military Sales Inc*	19,845,184
65	65	64	Flowers Foods*	19,649,273
66	67	62	Foster Farms*	19,484,625
67	66	63	JFC International Inc.*	19,177,172
68	71	72	Land O' Lakes*	19,002,656
69	70	71	Energizer Holdings Inc.*	18,955,406
70	60	58	Abbott Labs*	18,685,460



71	86	86	Egglan's Best Inc.	18,205,266
72	64	61	Ocean Spray Cranberries Inc.	16,901,178
73	43	41	Nayyarsons Corp.	16,660,163
74	75	73	Coleson Foods Inc.	16,467,126
75	82	79	Schreiber Foods	16,359,034
76	76	68	Butterball LLC*	16,331,361
77	85	171	Snyder's-Lance Inc.*	15,797,031
78	87	83	Luberski Inc.*	14,975,712
79	80	85	Cargill Meat Solutions Corp.	14,901,463
80	77	76	Prairie Farms Dairy*	14,886,986
81	79	82	Schwan's Consumer Brands NA	14,170,509
82	84	77	Dial Corp.	13,681,961
83	72	69	The Sun Products Corp.	13,519,943
84	96	96	First Wave Sales LLC*	12,897,457
85	89	84	Rondo Specialty Foods	12,345,217
86	88	90	Pharmavite LLC	11,972,089
87	93	95	GlaxoSmithKline Consumer Healthcare	11,574,134
88	91	87	Dr Pepper Snapple Group*	11,472,645
89	90	78	Dinofinn Inc.*	11,217,817
90	102	103	L & M Marketing LLC*	11,163,773
91	94	99	Mission Foods	10,683,476
92	95	91	Bayer Healthcare LLC	10,624,317



93	92	94	Pactiv Corp.	10,436,260
94	99	88	Euro American Brands Inc.	10,421,224
95	98	98	The Pictsweet Co.	10,397,055
96	104	106	B & G Foods Inc.	10,345,342
97	129	141	Gateway Military Sales*	10,031,074
98	108	121	John B. Sanfilippo & Son	9,550,593




Rankings			Company	Fiscal 2015 Payments
'15	'14	'13		
99	105	102	Mead Johnson & Co. LLC	\$9,358,112
100	101	105	Diamond Foods Inc.*	9,291,071
101	100	97	U.S. Nutrition* (Rexall Sundown)	9,227,306
102	97	92	Post Foods LLC	8,809,743
103	103	104	Bumble Bee Foods LLC	8,726,995
104	111	107	Birchwood Foods (Kenosha Beef)	8,663,680
105	81	66	Oriental Trading Co.*	8,596,385
106	106	100	McKee Foods Corp.	8,506,885
107	110	109	Riviana Foods Inc.	8,050,333
108	119	108	Hartz Mountain Corp.	7,872,261
109	109	101	Domino Foods Inc. (American Sugar Refining)	7,863,546
110	115	117	Chattem Inc.	7,822,150
111	132	133	EJP International Inc.	7,737,657
112	117	113	Di Tomaso Inc.	7,700,857
113	114	110	National Industries for the Blind	7,667,817
114	139	135	Lakeside Food Inc.	7,205,310
115	118	126	Pompeian Inc.	6,931,377
116	122	116	Red Bull North America*	6,890,236
117	112	114	L'Oréal USA Inc.*	6,781,462
118	113	112	MSD Consumer Care Inc.	6,707,786
119	120	119	Darigold Inc.*	6,669,937



120	61	67	AB Foods LLC*	6,540,064
121	131	129	Favata Bakery Inc.	6,305,593
122	134	128	White Dairy Ice Cream Co. Inc.*	5,750,416
123	128	127	Challenge Dairy Products Inc.	5,640,830
124	123	125	Welch's*	5,624,879
125	127	123	Rich Products Corp.*	5,570,976
126	124	120	Imperial Sugar Co.	5,499,554
127	121	118	Gorton's Inc.	5,455,606
128	125	124	Triunion Seafoods LLC	5,448,878
129	137	131	Mario Camacho Foods LLC	5,352,851
130	141	136	Shasta Sales Inc.	5,134,395
131	136	130	Otis McAllister Inc.*	5,067,129
132	138	142	Bellisio Foods Inc.	5,046,193
133	133	132	Maruchan Inc.	5,033,085
134	126	122	Dairy Maid Dairy Inc.	5,031,723
135	140	137	Carytown Seafood Inc.	4,965,982
136	135	138	Hillandale Farms East Inc.	4,800,282
137	143	134	Wells Enterprises Inc*	4,789,460
138	146	145	Sioux Honey Association	4,734,749
139	116	111	Ann's House of Nuts Inc.	4,732,120
140	150	146	M3 Inc.*	4,480,953
141	144	143	New World Pasta Co.	4,355,898
142	160	164	Foodonics Intl. (Dixie Egg Co.)*	4,211,664
143	148	148	Diamond Head Seafood Wholesale	4,210,279

—Continued



Rankings			Company	Fiscal 2015 Payments
'15	'14	'13		
144	145	140	Maryland & Virginia Milk Producers*	\$3,982,048
145	156	157	Hawaiian Isles Kona Coffee Co.	3,949,540
146	130	115	Borden Dairy Co.*	3,784,808
147	151	151	Kikkoman Sales USA Inc.	3,733,701
148	149	158	ACH Food Companies Inc.*	3,632,983
149	147	150	Sun Foods LLC	3,626,773
				
				
150	154	153	Newman's Own*	3,602,478
151	183	178	Oberto Sausage Co.	3,415,921
152	167	159	GFA Brands Inc.* (Smart Balance)	3,377,519
153	165	166	Cascade Northwest Brokers Inc.	3,112,540
154	152	149	Sacramento Valley Gourmet Harvest Foods	3,089,796
155	164	165	United States Bakery	3,009,748
156	157	156	Nissin Foods USA Co. Inc.	2,908,788
157	174	173	Palama Holdings LLC*	2,878,651
158	168	160	Beef Products Inc.*	2,810,927
159	166	170	Knouse Foods Inc.	2,799,421
160	178	147	Novartis Consumer Health Inc.*	2,744,476
161	169	172	Mount Olive Pickle Co. Inc.	2,735,053
162	179	184	Kee World Trading Co.*	2,696,696
163	173	176	Ruiz Food Products Inc.	2,693,616
164	162	167	Maola Milk & Ice Cream Co.*	2,650,921
165	158	155	Sunny Delight Beverages Co.*	2,627,496
166	182	228	Sunset Farms Food Inc.*	2,620,818
167	142	144	Blue Bell Creameries LP	2,592,500
168	184	186	Hawaii Foodservice Alliance LLC	2,576,780
169	170	163	Love's Bakery Inc.	2,554,846
170	172	168	Hollandia Dairy Inc.	2,284,872
				
171	187	187	Jones Dairy Farm	2,214,758
172	175	174	Great Atlantic News LLC	2,211,997
173	189	207	Filippo Berio (Salov North America)	2,094,819
174	197	200	Valley Fresh/Nest Best Eggs	2,051,190
175	176	169	Prospect Enterprises Inc.	2,050,958
176	188	191	Hawaiian Host Candies of L A Inc.	2,044,776
177	180	175	Fresh Mark Inc. dba Superior's Brand Meats	2,015,486
178	210	214	Hickman's Egg Ranch	1,997,669
179	161	189	JBS USA (Pilgrim's Pride)	1,928,675

Rankings			Company	Fiscal 2015 Payments
'15	'14	'13		
180	177	183	Andrew Jergens Co. (Kao USA Inc.)	\$1,900,370
181	186	188	Utz Quality Foods Inc.	1,891,777
182	181	182	Dairy Farmers of America (Kemp's)	1,846,754
183	190	198	Giorgio Foods Inc.	1,740,556
184	206	226	Bar Harbor Lobster Co. Inc.	1,709,549
185	198	195	N.K. Hurst Co. Inc.	1,686,852
186	-	-	Superior Management and Sales	1,668,440
187	78	202	Northern Fish Products Inc.*	1,667,313
188	191	185	Irving Tissue Inc.	1,651,331
189	200	216	Huhtamaki Foodservice Inc.	1,643,918
190	192	193	JCS Marketing Consultants Inc.	1,614,476
191	199	194	Martin's Famous Pastry Shoppe Inc.	1,609,273
192	204	210	50th State Poultry*	1,573,003
193	201	199	National Vitamin Co. Inc.	1,567,682
194	196	196	American Pop Corn Co.	1,560,072
195	211	204	Carl Buddig & Co. Inc.	1,559,973
196	214	209	Paradise Beverages Inc.	1,542,102
197	-	-	R&B Foods Inc.	1,468,819
				
198	193	201	Burlesons Inc.	1,461,184
199	215	211	Star Fisheries	1,458,003
200	213	212	Parra Sales*	1,442,327
201	209	231	Field Packing Co.	1,392,503
202	205	203	Schmidt Baking Co. Inc.	1,330,168
203	203	213	Royal Oak Sales Inc.	1,292,670
204	212	215	Voortman Cookies Limited	1,285,389
205	208	206	Shamrock Foods Co.	1,261,054
206	217	219	Storck USA LP	1,238,169
207	159	162	Rose Acre Farms Inc.	1,203,787
208	218	217	Golden Touch Trading Inc.	1,197,072
209	220	222	Boehringer Ingelheim Corp.	1,105,656
210	222	234	T.W. Garner Food Co.	1,075,347
211	219	221	Schulze & Burch Biscuit Co.	1,051,441
212	225	n.a.	Byrne Dairy Inc.	1,023,699

<b>Total Amount of FY15 DeCA Vendor Payments .....</b>	<b>\$5,547,448,180</b>
<b>Total Payments to Million-Dollar Vendors.....</b>	<b>\$5,478,278,192</b>
<b>Balance.....</b>	<b>\$69,169,988</b>

Compiled by Exchange and Commissary News  
 \*Indicates consolidated listings

Source: DeCA