

# NAVY LODGE PROGRAM

# NAVY LODGE PROGRAM

## Fiscal 2017 Total Revenue



### NAVY LODGE PROGRAM

Joint Expeditionary Base  
Little Creek – Fort Story, Va.  
1240 Gator Blvd., Suite 200  
Building 3126  
Virginia Beach, VA 23459  
Phone: (757) 502-7499  
Fax: (757) 424-9350

#### Vice President, Director, Navy Lodge Program

Michael Bockelman

#### Regional Managers

Francine Faison  
Susan Jicha  
Karla Hardy  
Bill Mayhue

#### Facilities Manager

Mark LaVoie

#### Financial Manager

Pamela Wheeler

#### Special Projects Manager

Gwen Ellis Smith

#### Marketing Manager

Susan Langless

#### Director, DoD Reservations Center

Stephen Pepe

<b>TOTAL NUMBER OF LODGES:</b> .....	<b>39</b>
<b>CONUS:</b> .....	<b>\$62,733,760</b>
<b>OCONUS:</b> .....	<b>\$21,559,003</b>
<b>WORLDWIDE:</b> .....	<b>\$84,292,762</b>

#### CONUS (ranked by revenue)

NAS North Island, Calif. ....	\$10,421,095
NS Norfolk, Va. ....	7,505,994
NB San Diego, Calif. ....	5,221,884
JEB Little Creek-Fort Story, Va. . .	3,341,505
NSA Bethesda, Md. ....	2,755,645
NAS Pensacola, Fla. ....	2,436,998
NAS Jacksonville, Fla. ....	2,338,297
NS Great Lakes, Ill. ....	2,093,583
NS Mayport, Fla. ....	2,075,464
NSA Monterey, Calif. ....	1,945,941
NCBC Gulfport, Miss. ....	1,775,970
NAS Moffett Field, Calif. ....	1,725,311
Navy Lodge Staten Island, N.Y. . .	1,524,644
NAS Lemoore, Calif. ....	1,485,476
NSB New London, Conn. ....	1,475,555
NS Newport, R.I. ....	1,391,260
Dam Neck Annex (Oceana), Va. . .	1,373,227
NAS Whidbey Island, Wash. . . .	1,251,193
NBVC Port Hueneme, Calif. ....	1,203,509
NBK Bangor, Wash. ....	1,182,869
NAS JRB Fort Worth, Texas . . . .	1,177,610
NSA Annapolis, Md. ....	1,120,435

NAS Corpus Christi, Texas. ....	1,060,138
NS Everett, Wash. ....	998,695
Washington Navy Yard, Washington, D.C. ....	996,377
NAS Patuxent River, Md. ....	971,970
NAS Key West, Fla. ....	724,860
NSA Mid-South (Memphis), Tenn. .	507,521
NSB Kings Bay, Ga. ....	496,850
NAF El Centro, Calif. ....	71,052
NAS Fallon, Nev. ....	62,002

**Total CONUS. .... \$62,733,760**

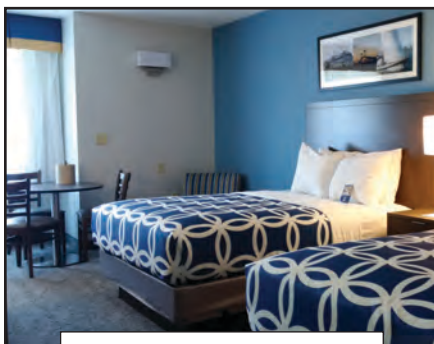
#### OCONUS (ranked by revenue)

JB Pearl Harbor-Hickam, Hawaii	\$6,069,376
NSA Naples, Italy. ....	5,326,176
NE Yokosuka, Japan. ....	4,568,563
FA Sasebo, Japan. ....	1,479,816
NAS Sigonella, Italy ....	1,334,610
NS Rota, Spain. ....	1,289,605
NAF Atsugi, Japan. ....	1,092,168
NS Guantanamo Bay, Cuba . . . .	398,689

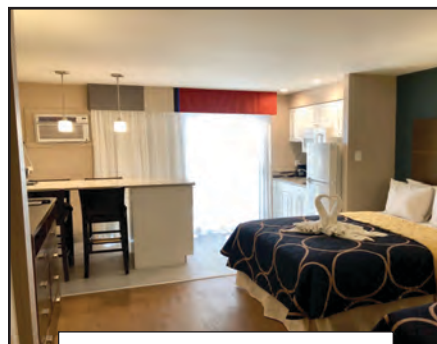
**Total OCONUS . . . . . \$21,559,003**



Navy Lodge North Island, Calif.



Navy Lodge New London, Conn.



Navy Lodge Port Hueneme, Calif.